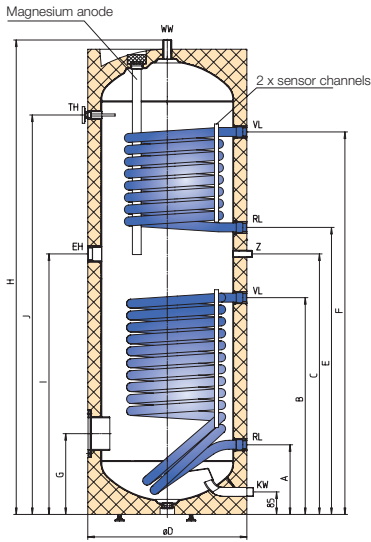


# UPRIGHT TANK

SOLAR TANK  
WITH FOIL JACKET  
HT 200 ERMR  
HT 300 ERMR  
HT 400 ERMR  
HT 500 ERMR



# SOLAR TANK WITH FOIL JACKET AND WITH TWO HEAT EXCHANGERS



- TH- Thermometer 1/2", female threads
- EH- Screw-in heater sleeve 1 1/2", female threads
- Z- Circulation 3/4", male threads (1" at HT 500 ERMR)
- VL- Boiler supply 1", female threads
- RL- Boiler return 1", female threads
- WW- Hot water outlet 1", male threads
- KW- Cold water supply 1", male threads
- Bride: Ø 180 mm

- Large heat exchanger surfaces
- Welded-in high-performance straight-tube heat exchanger (not susceptible to limescale)
- Enamelling and Mg anode comply with DIN 4753 T3 and T6
- High-quality PU insulation, 50 mm
- Upward-facing hot water outlet guarantees complete venting
- Thermometer, dummy flange (D 180 mm) and flange insulating cover fitted ex works
- All storage tanks include 1 1/2" sleeve (sealed ex works) for SH-series screw-in heaters
- Variable sensor position (double sensor channel)
- Accessories: ATR charge pump controller combination
- Includes foil jacket in a colour of your choice, reducing stock
- Height-adjustable feet (included)

| Tank model  | A mm | B mm | C mm | ØD mm | E mm | F mm | G mm | H mm | I mm | J mm | Anode mm   | Diagonal height mm | Weight kg | Heat exchanger capacity l upper/lower | ETE <sup>1)</sup> mm | ETF <sup>2)</sup> mm |
|-------------|------|------|------|-------|------|------|------|------|------|------|------------|--------------------|-----------|---------------------------------------|----------------------|----------------------|
| HT 200 ERMR | 263  | 638  | 870  | 610   | 750  | 1020 | 305  | 1340 | 695  | 1050 | Ø 33 x 480 | 1440               | 104       | 4,4/5,9                               | 520                  | 420                  |
| HT 300 ERMR | 263  | 818  | 983  | 610   | 1083 | 1443 | 305  | 1797 | 983  | 1507 | Ø 33 x 700 | 1860               | 131       | 5,9/8,9                               | 520                  | 420                  |
| HT 400 ERMR | 320  | 880  | 1000 | 680   | 1100 | 1460 | 345  | 1832 | 1000 | 1521 | Ø 33 x 750 | 1930               | 158       | 5,9/11,5                              | 590                  | 490                  |
| HT 500 ERMR | 370  | 930  | 1095 | 760   | 1195 | 1465 | 370  | 1838 | 1095 | 1498 | Ø 33 x 850 | 1965               | 172       | 6,2/12,6                              | 670                  | 580                  |

<sup>1)</sup> Installation depth of screw-in heater sleeve for SH heating

<sup>2)</sup> Installation depth of flange for built-in heater or finned tube heat exchanger

|                        | Heating surface in m <sup>2</sup> | Flow performances in kW or l/h |                    |                    |                    |                    |                    |                    |                    |                    |                    |                    |                    | Radiation value <sup>3)</sup> | Performance indicator N <sub>l</sub> |      |
|------------------------|-----------------------------------|--------------------------------|--------------------|--------------------|--------------------|--------------------|--------------------|--------------------|--------------------|--------------------|--------------------|--------------------|--------------------|-------------------------------|--------------------------------------|------|
|                        |                                   | 70°C                           | 70°C               | 70°C               | 80°C               | 80°C               | 80°C               | 80°C               | 70°C               | 70°C               | 70°C               | 80°C               | 80°C               |                               |                                      | 80°C |
| Supply temperature     |                                   | 70°C                           | 70°C               | 70°C               | 80°C               | 80°C               | 80°C               | 80°C               | 70°C               | 70°C               | 70°C               | 80°C               | 80°C               | 80°C                          |                                      | 80°C |
| Hot water temperature  |                                   | 45°C                           | 45°C               | 45°C               | 45°C               | 45°C               | 45°C               | 45°C               | 60°C               | 60°C               | 60°C               | 60°C               | 60°C               | 60°C                          |                                      | 60°C |
| Cold water temperature |                                   | 10°C                           | 10°C               | 10°C               | 10°C               | 10°C               | 10°C               | 10°C               | 10°C               | 10°C               | 10°C               | 10°C               | 10°C               | 10°C                          |                                      | 10°C |
| Flow rate              |                                   | 1m <sup>3</sup> /h             | 2m <sup>3</sup> /h | 3m <sup>3</sup> /h | 1m <sup>3</sup> /h | 2m <sup>3</sup> /h | 3m <sup>3</sup> /h | 1m <sup>3</sup> /h | 2m <sup>3</sup> /h | 3m <sup>3</sup> /h | 1m <sup>3</sup> /h | 2m <sup>3</sup> /h | 3m <sup>3</sup> /h |                               | 3m <sup>3</sup> /h                   |      |
| HT 200 ERMR            | 0,91                              | 18,0                           | 21,6               | 23,5               | 23,3               | 28,4               | 31,0               | 13,2               | 15,5               | 16,6               | 19,1               | 23,0               | 24,8               | 1,9                           | 3,5                                  |      |
| lower                  |                                   | 443                            | 531                | 578                | 573                | 699                | 761                | 227                | 267                | 286                | 328                | 396                | 427                |                               |                                      |      |
| HT 200 ERMR            | 0,70                              | 13,1                           | 15,3               | 16,3               | 18,0               | 21,5               | 23,2               | 9,5                | 10,9               | 11,5               | 14,0               | 16,3               | 17,5               | 1,9                           | 1                                    |      |
| top                    |                                   | 322                            | 376                | 401                | 443                | 529                | 571                | 164                | 188                | 198                | 241                | 281                | 301                |                               |                                      |      |
| HT 300 ERMR            | 1,40                              | 23,0                           | 30,1               | 31,8               | 29,8               | 39,1               | 42,7               | 17,1               | 20,9               | 22,4               | 24,8               | 31,0               | 33,9               | 2,3                           | 7,5                                  |      |
| lower                  |                                   | 566                            | 740                | 782                | 733                | 962                | 1050               | 294                | 360                | 386                | 427                | 534                | 584                |                               |                                      |      |
| HT 300 ERMR            | 0,93                              | 16,6                           | 20,2               | 21,8               | 21,9               | 26,7               | 29,1               | 12,2               | 14,4               | 15,7               | 18,1               | 21,7               | 23,6               | 2,3                           | 1,8                                  |      |
| top                    |                                   | 408                            | 497                | 536                | 539                | 657                | 716                | 210                | 248                | 270                | 312                | 374                | 406                |                               |                                      |      |
| HT 400 ERMR            | 1,76                              | 27,2                           | 34,8               | 38,9               | 35,1               | 45,1               | 50,7               | 20,4               | 25,5               | 27,5               | 29,3               | 37,1               | 41,2               | 2,5                           | 11                                   |      |
| lower                  |                                   | 669                            | 856                | 957                | 863                | 1109               | 1247               | 351                | 439                | 474                | 505                | 639                | 709                |                               |                                      |      |
| HT 400 ERMR            | 0,93                              | 16,7                           | 20,0               | 21,5               | 21,6               | 26,1               | 28,2               | 12,4               | 14,5               | 15,4               | 18,0               | 21,4               | 23,0               | 2,5                           | 3                                    |      |
| top                    |                                   | 411                            | 492                | 529                | 531                | 642                | 694                | 214                | 250                | 265                | 310                | 369                | 396                |                               |                                      |      |
| HT 500 ERMR            | 1,95                              | 29,8                           | 39,2               | 44,2               | 38,3               | 51,2               | 58,1               | 21,9               | 27,2               | 29,5               | 31,7               | 42,1               | 48,1               | 2,8                           | 15                                   |      |
| lower                  |                                   | 733                            | 964                | 1087               | 942                | 1260               | 1429               | 377                | 468                | 508                | 546                | 725                | 828                |                               |                                      |      |
| HT 500 ERMR            | 0,96                              | 16,2                           | 19,6               | 20,9               | 20,3               | 25,0               | 27,5               | 11,4               | 13,5               | 14,0               | 16,8               | 19,9               | 21,0               | 2,8                           | 3,7                                  |      |
| top                    |                                   | 399                            | 482                | 514                | 499                | 615                | 677                | 196                | 232                | 241                | 289                | 343                | 362                |                               |                                      |      |

<sup>3)</sup> According to EN 12897

Head office and factory: Austria Email AG  
A-8720 Knittelfeld, Austriastrasse 6  
Phone (03512) 700-0, Fax (03512) 700-239  
Internet: www.austria-email.at  
E-mail: office@austria-email.at

Customer Service: Phone (03512) 700-297  
E-mail: kundendienst@austria-email.at

#### Sales offices:

Vienna, Lower Austria, Burgenland  
A-1230 Wien, Zetschegasse 17  
Phone (01) 6150727, Fax (01) 6150727-260  
E-mail: tvondal@austria-email.at

Styria, Carinthia, East Tyrol  
A-8053 Graz, Dr. Heschlweg 6  
Phone (0316) 271869, Fax (0316) 273126  
E-mail: gbretterklicke@austria-email.at

Upper Austria, Salzburg  
A-4600 Wels, Gärtnerstrasse 17  
Phone (07242) 45071, Fax (07242) 43650  
E-mail: akweton@austria-email.at

Tyrol, Vorarlberg  
A-6020 Innsbruck, Etrichgasse 24  
Phone (0512) 347951, Fax (0512) 393353  
E-mail: hrupepp@austria-email.at

#### Sales offices Germany:

Germany North/East  
D-14770 Brandenburg, Beetzseeufer 3  
Phone 0049/(0)3381 / 766-0  
Fax 0049/(0)3381 / 766-244  
E-mail: sgobi@austria-email.at

Germany South  
D-92637 Weiden/Opf., Parksteiner Strasse 49  
Phone 0049/(0)961 / 63 490-0  
Fax 0049/(0)961 / 63 490-30  
E-mail: ahirmer@austria-email.at

**AE**  
Austria Email