

Information on fuses can be found in the technical data

SVP

- Legend:
- A1 Name
 - A2
 - A5
 - F-11
 - F-12
 - Q0
 - X10
 - X1

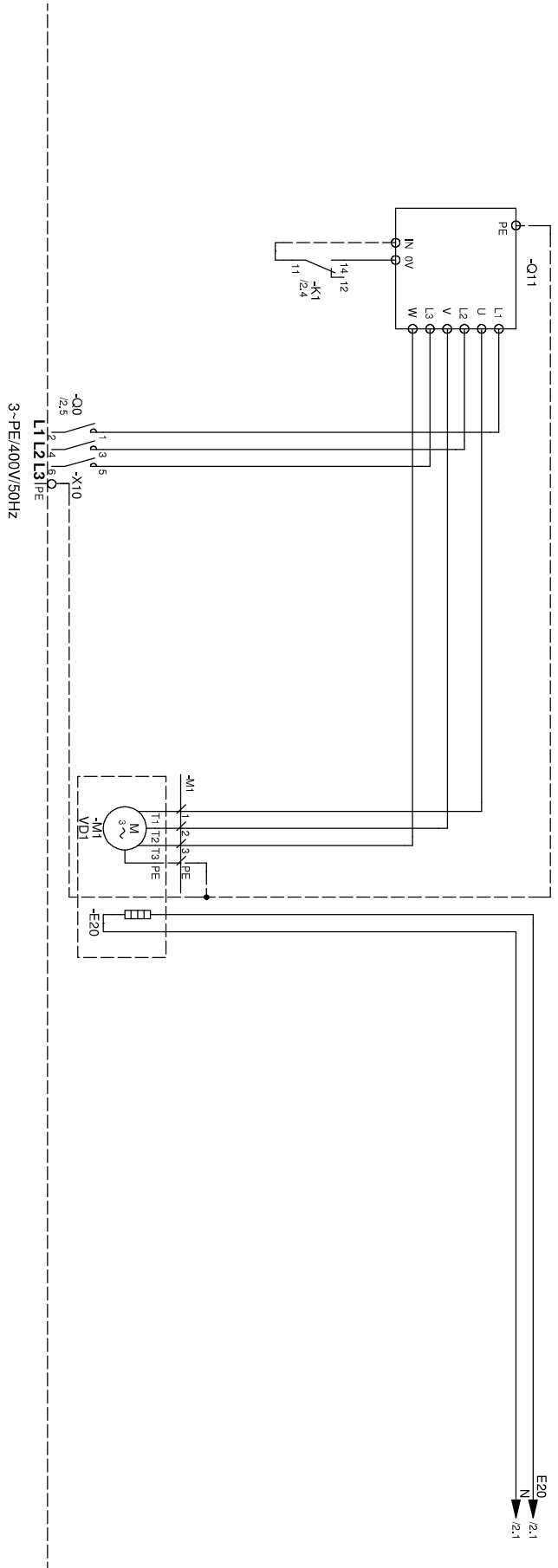
- Terminals
- BUP
 - DFS
 - EVU
 - FP1
 - HUP
 - LN
 - MA1/MIS
 - MZ1/MIS
 - MOT
 - PEX
 - RFV
 - TA
 - TB1
 - TB2
 - TB3
 - TB4
 - TB5
 - TB6
 - TB7
 - TB8
 - TB9
 - TB10
 - TB11
 - TB12
 - TB13
 - TB14
 - TB15
 - TB16
 - TB17
 - TB18
 - TB19
 - TB20
 - TB21
 - TB22
 - TB23
 - TB24
 - TB25
 - TB26
 - TB27
 - TB28
 - TB29
 - TB30
 - TB31
 - TB32
 - TB33
 - TB34
 - TB35
 - TB36
 - TB37
 - TB38
 - TB39
 - TB40
 - TB41
 - TB42
 - TB43
 - TB44
 - TB45
 - TB46
 - TB47
 - TB48
 - TB49
 - TB50
 - TB51
 - TB52
 - TB53
 - TB54
 - TB55
 - TB56
 - TB57
 - TB58
 - TB59
 - TB60
 - TB61
 - TB62
 - TB63
 - TB64
 - TB65
 - TB66
 - TB67
 - TB68
 - TB69
 - TB70
 - TB71
 - TB72
 - TB73
 - TB74
 - TB75
 - TB76
 - TB77
 - TB78
 - TB79
 - TB80
 - TB81
 - TB82
 - TB83
 - TB84
 - TB85
 - TB86
 - TB87
 - TB88
 - TB89
 - TB90
 - TB91
 - TB92
 - TB93
 - TB94
 - TB95
 - TB96
 - TB97
 - TB98
 - TB99
 - TB100

UK33175
 Function
 Controller board: Attention: I-max = 6A/230VAC
 Control element
 Sub-distribution unit internal installation
 Single pole miniature circuit-breaker of compressor to IEC 60947-2: Important: Clockwise rotary field is absolutely essential!
 Cut out controller unit
 Main contactor: mains power 3~PE/400V/50Hz
 Terminals in heat pump switchbox

Hot water circulating pump/switching valve
 External low rate switch: bridge if no switch is connected.
 Energy supplier contact: closed on release; bridge if no blocking interval
 Pump for mixing circuit 1
 Heating circuit circulating pump
 Heating circuit control unit
 Charge/discharge/cooling mixer 1 open
 Charge/discharge/cooling mixer 1 closed
 Connection of external motor protection: bridge if no external motor protection is connected.
 No function
 Power supply compressor: 3x400V; Important: Clockwise rotary field is absolutely necessary!
 Accessories: Remote control
 External sensor
 Sensor mixing circuit 1
 Hot water gauge/thermostat
 External return sensor
 Brine pump
 Terminal strips on controller board
 Terminal strip in switchbox of heat pump: N/PE distribution for external 230V units
 Power supply controller 230V
 Auxiliary circulation pump
 Circulation pump
 Control signal of additional heat generator 1
 Control signal of additional heat generator 2 (alternative is general malfunction)

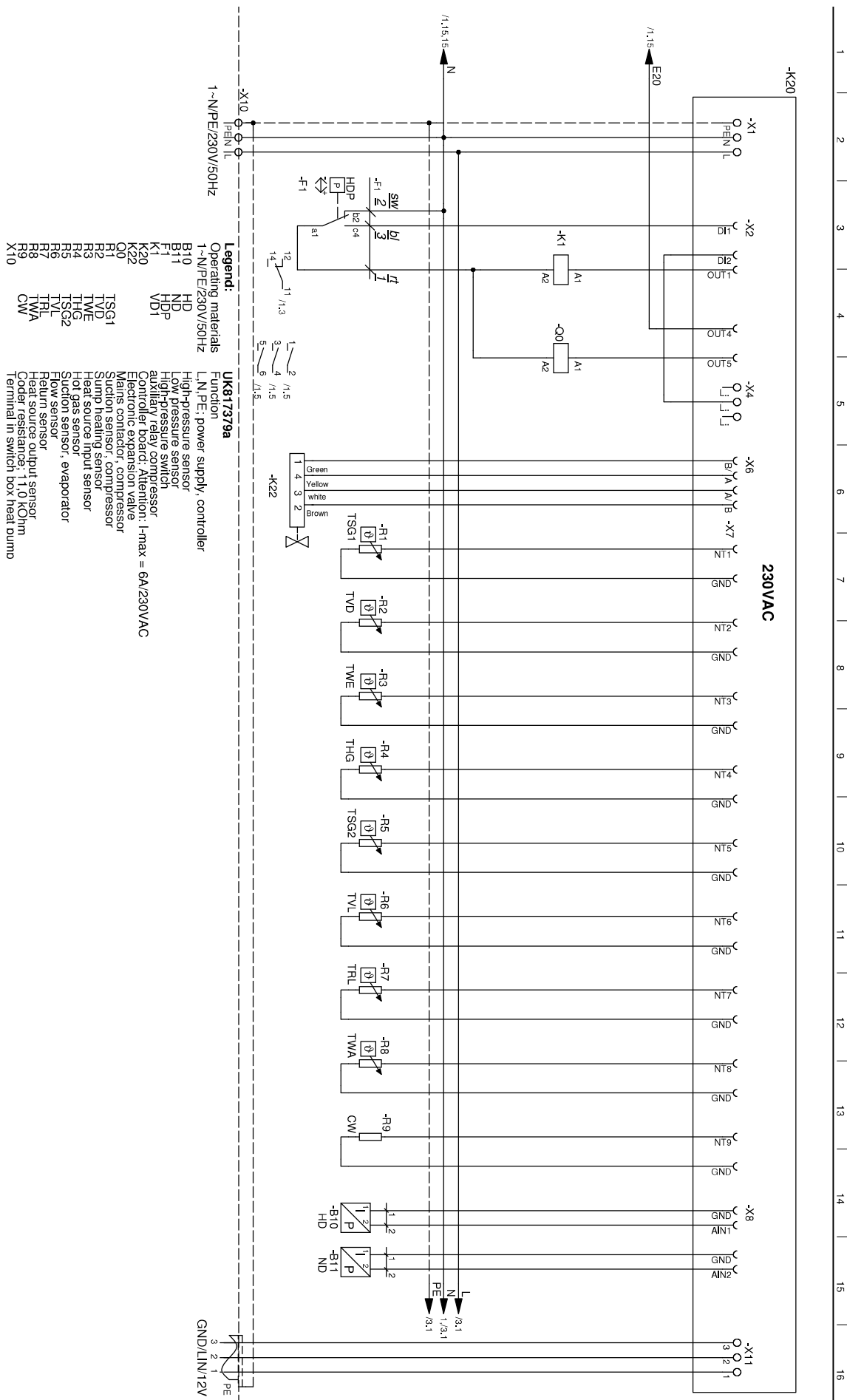


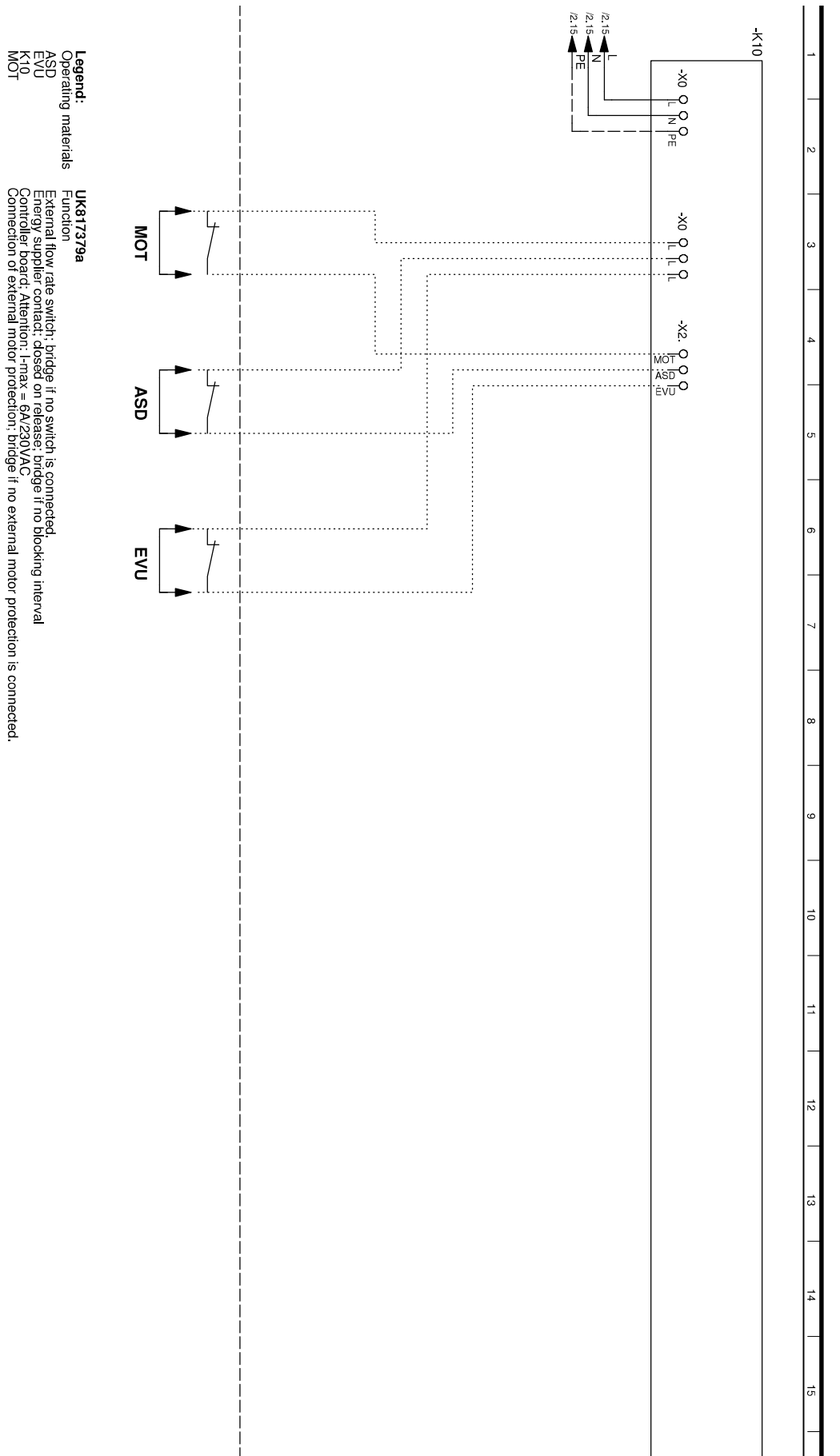
1 2 3 4 5 6 7 8 9 10 11 12 13 14 15

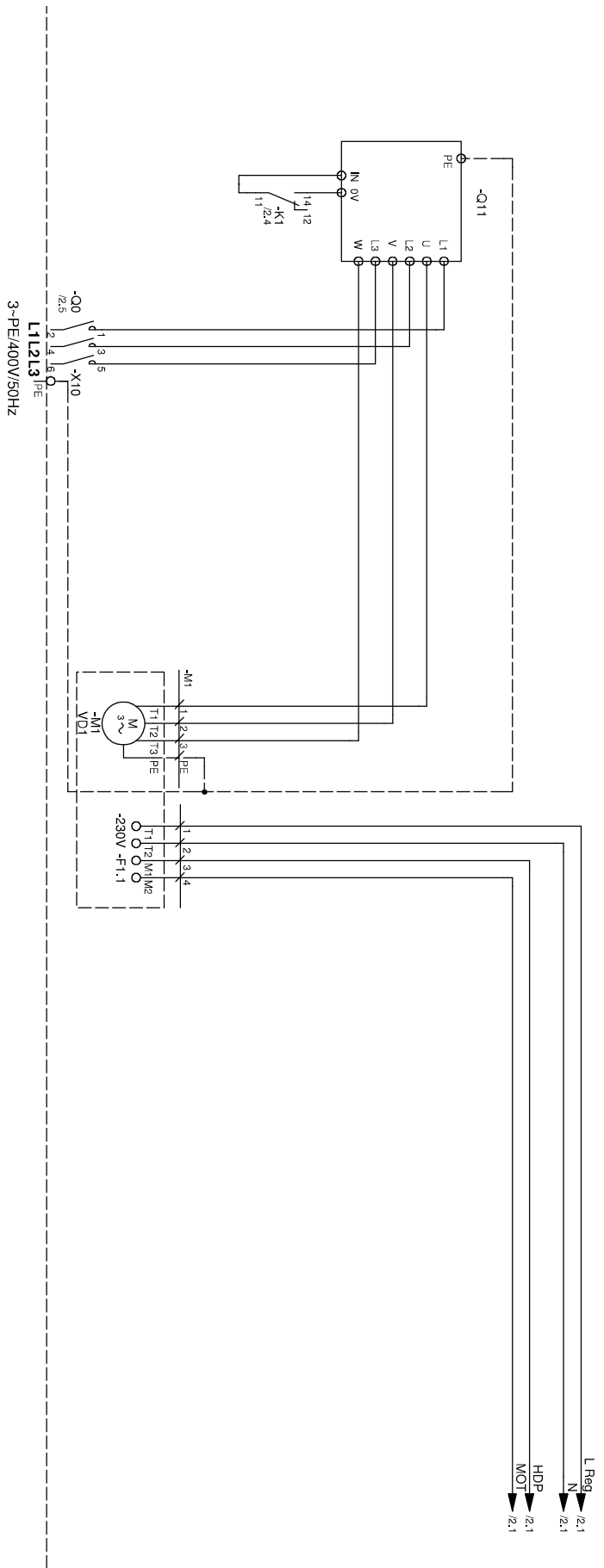


Legend:
UK817379a
 Operating materials
 3~PE/400V/50Hz
 E20
 M1
 K1
 Q0
 Q11
 X10

Function
 L1, L2, L3, PE: power supply, output; compressor; dockwise rotary field is absolutely necessary!
 Sump heating for compressor 1
 compressor
 auxiliary relay; compressor
 Mains contactor; compressor
 Starting current limit; compressor
 Terminal in switch box heat pump







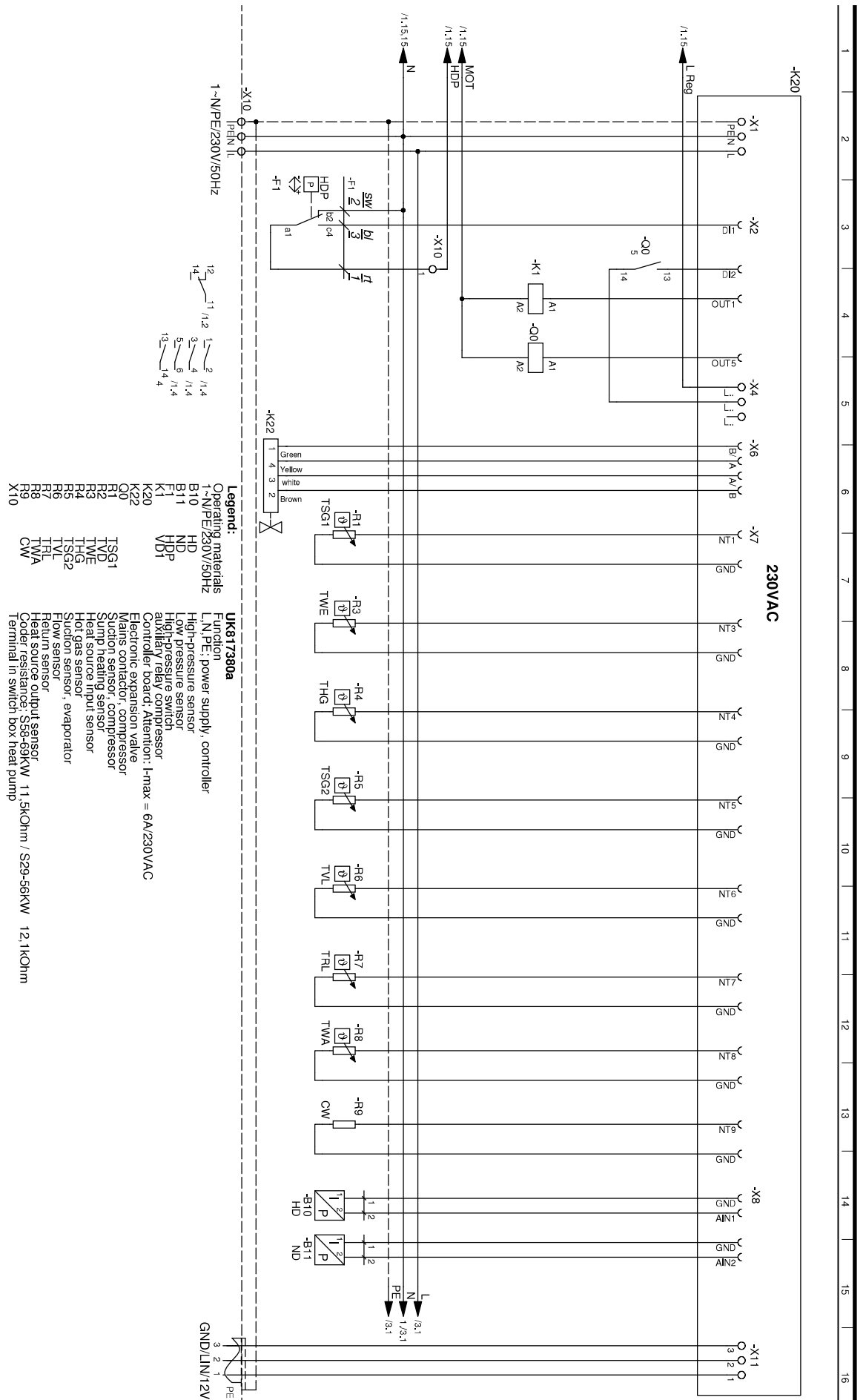
Legend:

UK817380a
 Function
 L1, L2, L3, PE, power supply, output, compressor; clockwise rotary field is absolutely necessary!

Operating materials
 3-PE/400V/50Hz
 E20
 F1.1
 M1
 K1
 Q0
 Q11
 X10

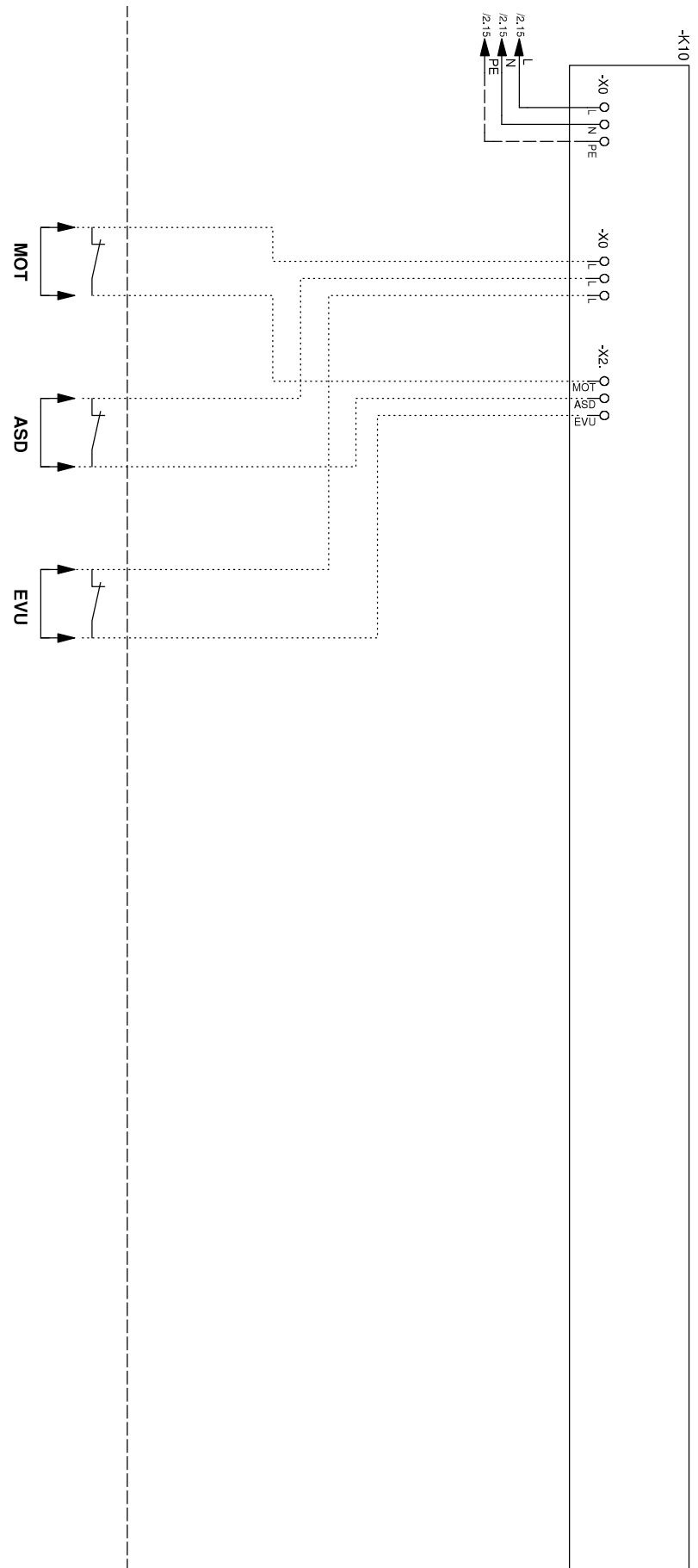
VD1
 Sump heating for compressor 1
 Compressor rotor protection
 compressor
 auxiliary relay compressor
 Mains contactor compressor
 Starting current limit compressor
 Terminal in switch box heat pump





Legend:

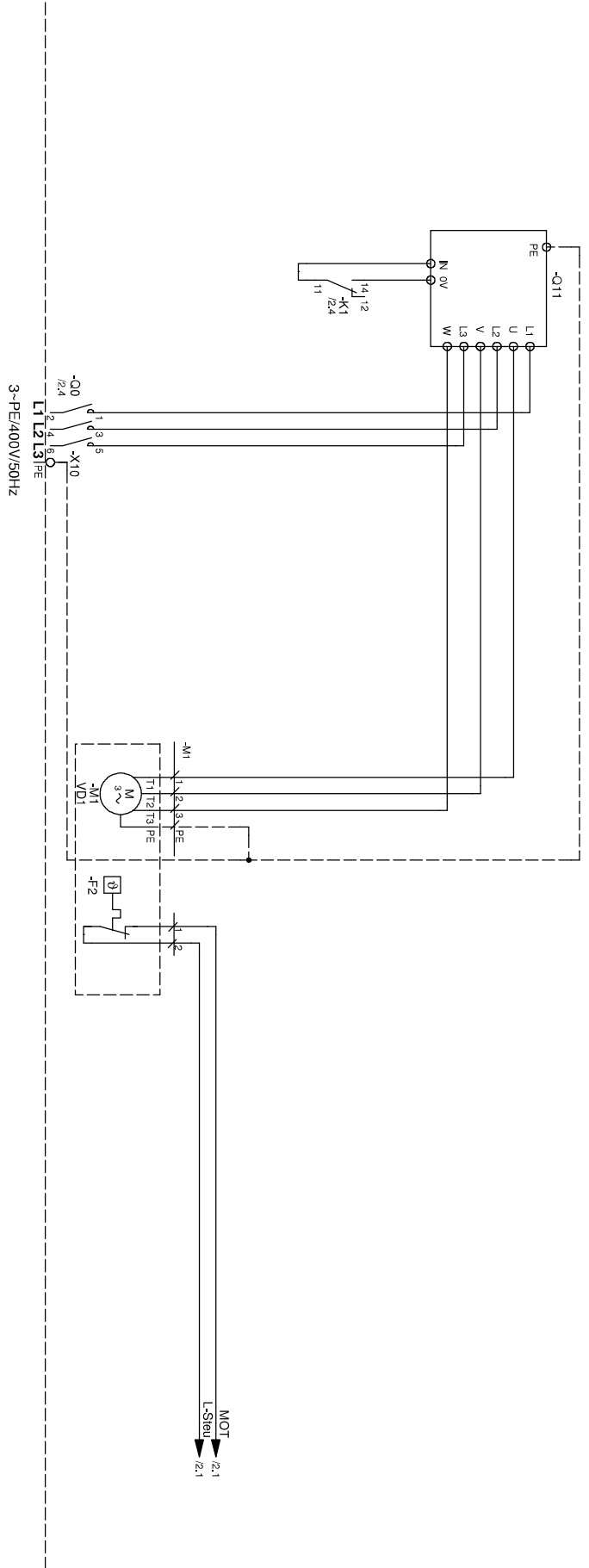
Operating materials	Function
1-N/PE/230V/50Hz	L, N, PE; power supply, controller
B10	High-pressure sensor
B11	Low-pressure sensor
HD	High-pressure sensor
ND	Low-pressure sensor
K1	auxiliary relay compressor controller board, Attention: I-max = 6A/230VAC
K20	Electronic expansion valve
QV	Valve connector, compressor
R1	Suction sensor, compressor
R2	Suction sensor, evaporator
R3	Heat source input sensor
R4	Hot gas sensor
R5	Suction sensor, evaporator
R6	Flow sensor
R7	Return sensor
R8	Heat source output sensor
R9	Coder resistance: S58-69KW 11.5kOhm / S29-56KW 12.1kOhm
X10	Terminal in switch box heat pump



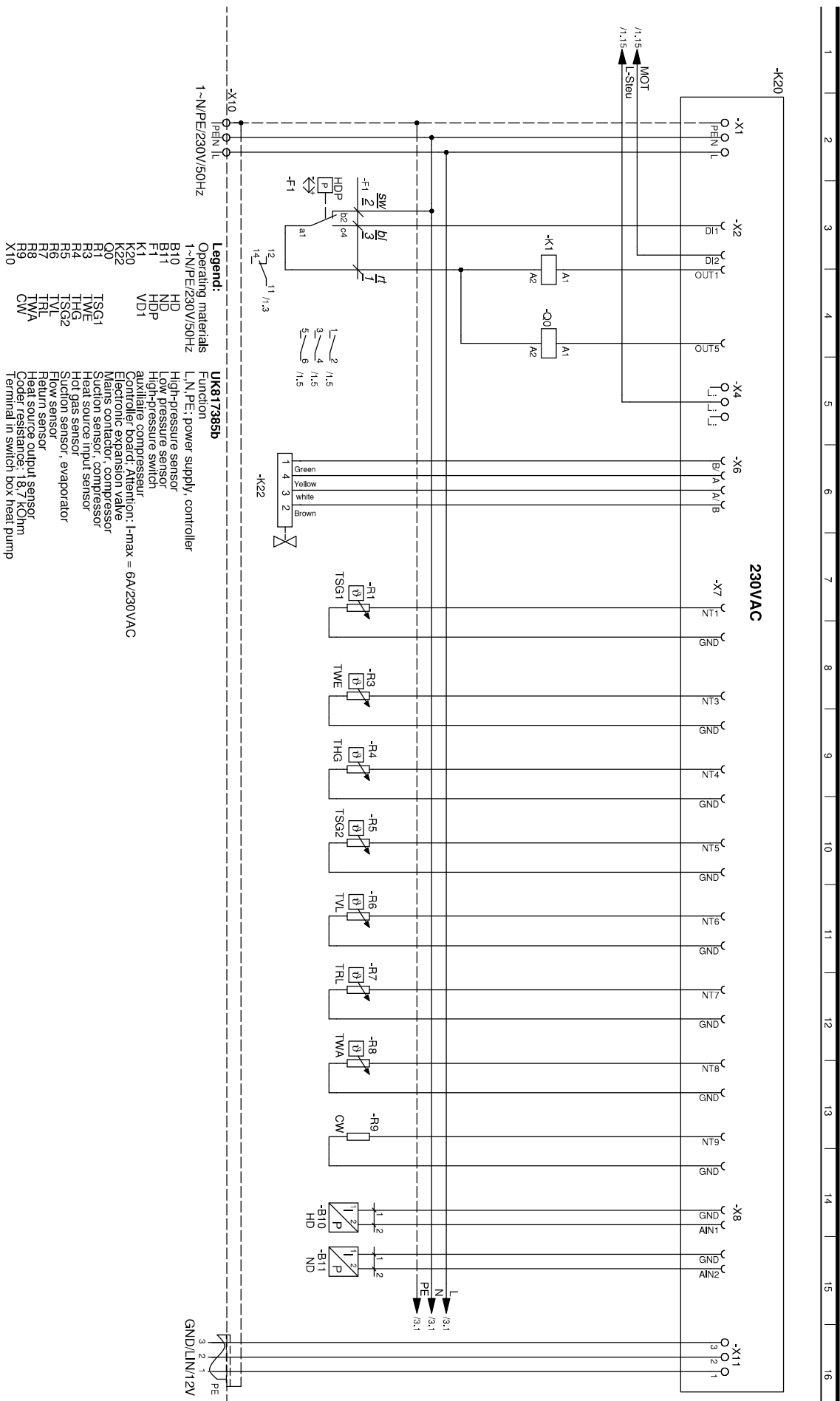
Legend:
 Operating materials UK817380a
 Function
 External flow rate switch, bridge if no switch is connected.
 ASD Energy supplier contact; closed on release; bridge if no blocking interval
 EVU Controller board; Attention: I_n-max = 6A/230VAC
 MOT Connection of external motor protection; bridge if no external motor protection is connected.



1 2 3 4 5 6 7 8 9 10 11 12 13 14 15 16

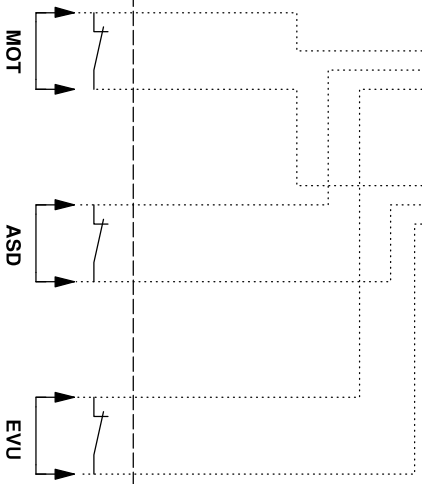
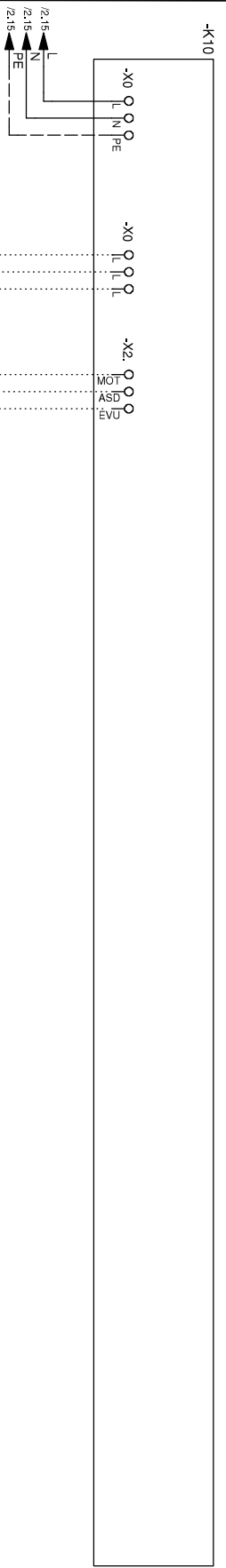


- Legend:**
- | | | |
|---------------------|------------------|--|
| Operating materials | UK817385b | Function |
| 3-PE/400V/50Hz | | L1, L2, L3, PE; power supply, output, compressor, dockwise rotary field is absolutely necessary! |
| F2 | | Compressor motor protection |
| M1 | VD1 | compressor |
| K1 | | auxiliary compressor |
| Q0 | | Mains contactor, compressor |
| X10 | | Starting current limit compressor |
| | | Terminal in switch box heat pump |





1 2 3 4 5 6 7 8 9 10 11 12 13 14 15 16



Legend:
 Operating materials UK817385b
 Function
 External flow/rate switch: bridge if no switch is connected.
 Energy supplier contact: closed on release; bridge if no blocking interval
 Controller board; Attention: I-max = 6A/230VAC
 Connection of external motor protection; bridge if no external motor protection is connected.