

Actuators



WITA Actuators

Product description

The actuators are used to control the position of rotary mixing valves, ball valves and other valves. Their modern design and the use of high-quality materials ensure reliable and silent operation. By pressing the mounting button on the actuator, assembly and disassembly are carried out without any extra tools.

By pressing the release button for manual adjustment (manual clutch) any position of the valve can be set by hand. During operation the direction of rotation is indicated by LEDs.

Technical features

- Torque 5 Nm, 10 Nm or 15 Nm
- Rotation angle 90°
- Rotational speed 2 min./90°
(option 15 s/90°, 30 s/90°, 60 s/90°, 120 s/90°, 240 s/90°, 480 s/90°)
- 2-point, 3- point or proportional operating mode
- Suitable for assembly on rotary mixing valve
- Display of the current valve position
- Rotation direction indicated by LEDs
- No damage of the actuator if the valve is blocked
- Possibility of the manual adjustment of the mixing valve to any position by permanent coupling
- Silent and reliable operation
- Maintenance-free
- Quick and easy assembly without any extra tools

Technical data

| SM W05

| SM W10

| SM W15

Torque	5 Nm	10 Nm	15 Nm
Rotation angle	90°		
Rotational speed	2 Min./90° (15 s/90°, 30 s/90°, 60 s/90°, 120 s/90°, 240 s/90°, 480 s/90°)		
Operating mode	2-point (230 V, 50 Hz / 24 V, 50 Hz) 3-point (230 V, 50 Hz / 24 V, 50 Hz) proportional 0 (2) - 10 V (24 V ac/dc) / 0 (4) - 20 mA (24 V ac/dc)		
Additional switch	settable 0 °C - 90 °C (250 V, 3 A)		
Temperature range	0 °C - 50 °C		
Rated power	2.5-4 VA		
Protection	Protection class II, protection rating IP42		
Dimensions (W x L x H)	84 x 102 x 91 mm		
Weight	390-630 g	600-860 g	600-860 g
Colour / material	dark grey / polycarbonate		

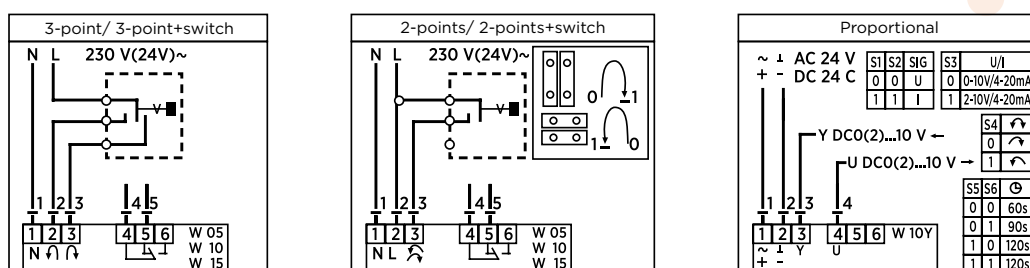
Variants of assembly kits

- Esbe, Seltron, Somatherm, Hora, PAW, WITA® Acaso, BRV, IMIT, Ivar, Hoval, Olymp
- Siemens VBI, VBF
- Meibes
- Esbe VRG
- PAW K32, K33, K34
- Danfoss HRB3
- Ball valve ISO5211, F03, L (9 mm)
- Ball valve ISO5211, F04, L (11 mm)
- Ball valve Belimo R2..xx-S.., F04, L (10 mm)
- Herz MV3P, MV4P
- Honeywell V544-543

Assembly kits for other valves on request.

Product data: see catalogue, p. 102-103

Electrical connection



Dimensions

